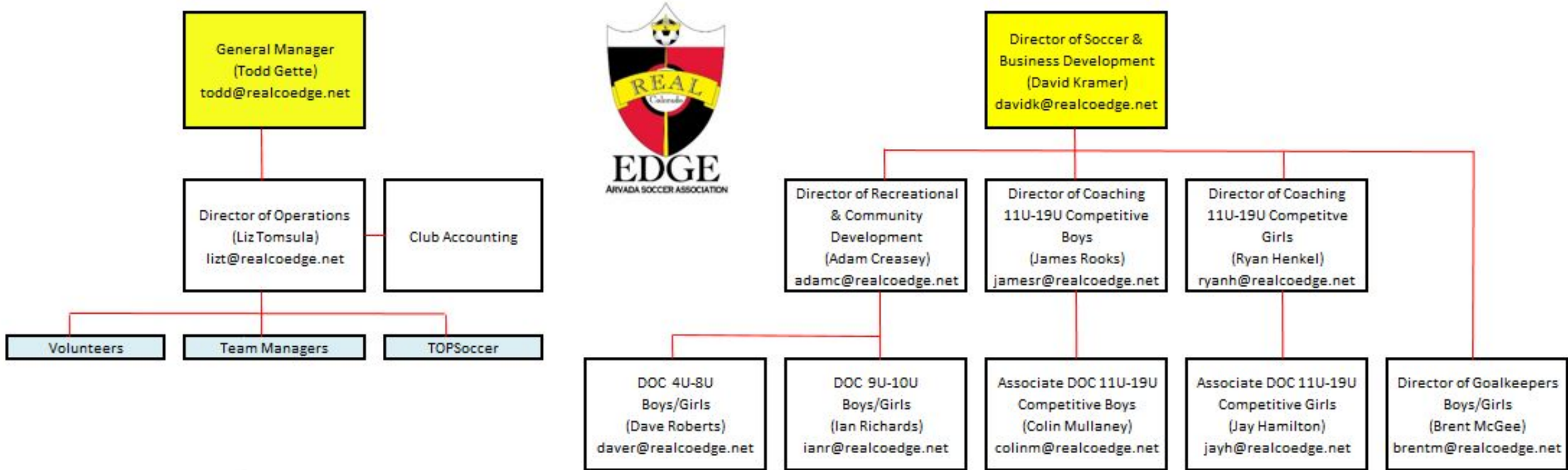


**Real Colorado EDGE Soccer Club**  
**11 Under (players born in 2008) Informational Meeting**  
Monday April 9, 7:30pm - APEX Center - Randall Room



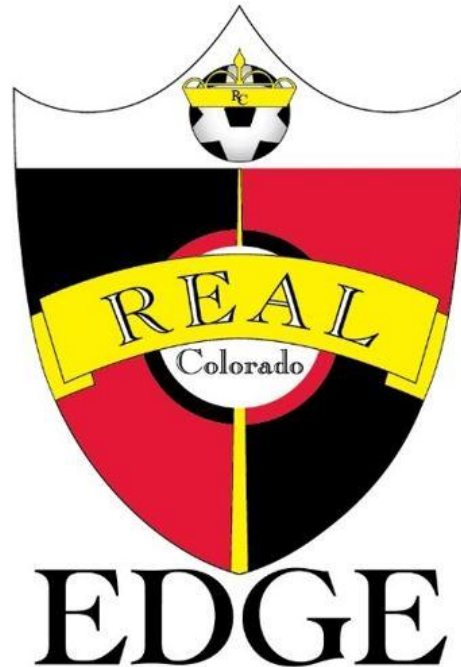
# Welcome / Introduction

## Real Colorado EDGE Soccer Club Staff



# Club and Core Values

Real Colorado EDGE Soccer Club - RCE



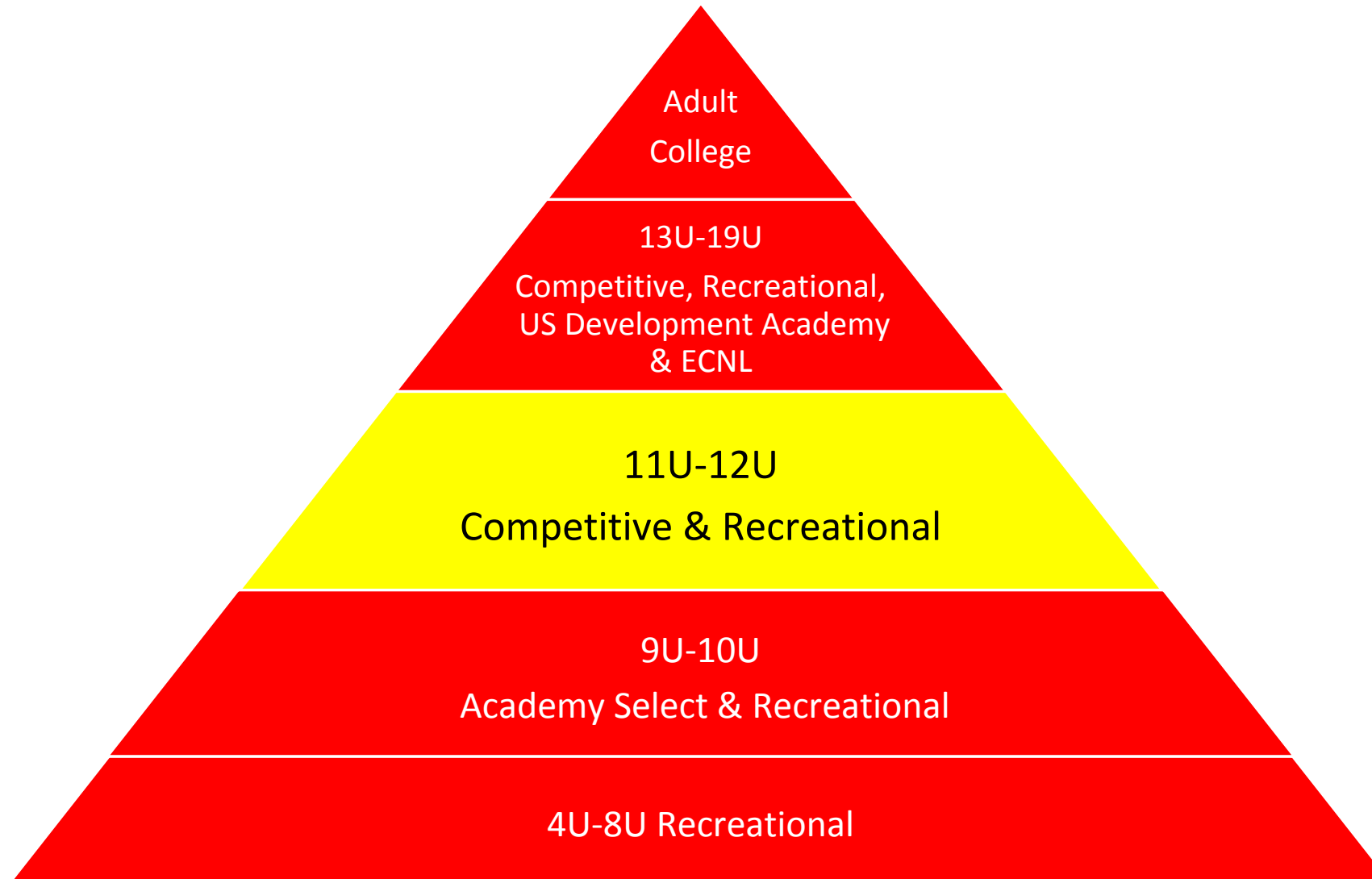
**R**ESPECT

**C**LASS

**E**XCELLENCE



# RCE Programs & Player Pathway



# Age Group Pyramid



# What Happens at 11U (players born in 2008)

Recreational

Competitive

(2 Tiers – Competitive & Intermediate)



# Recreational Soccer

Team Formation – Based on player registration, requests and roster needs

Coaches - Volunteer

Team levels – There are no levels

Practices – 2 nights per week at Stenger Soccer Complex

# teams per age group – Based on players registered

League Games – 8 per season

Teams will be placed in an appropriate league by the RCE Staff

- In house league with surrounding cities/clubs or State League

Tournaments – Stenger Tournament (Memorial Day weekend)

Cost

- Does not include tournaments, uniforms, indoor field space if needed

Payment Plans – flexible options are available

Fundraising - Different options and programs available

- Grocery Script Program
- GL Script

Recreational	Per Season
11U-14U	\$155



# Recreational Soccer

What is the season and year calendar?

## Fall Season

- Pre-season begins late August
- League games played early September through late October

## Winter

- Indoor soccer team by team basis. Nothing mandatory during the winter.

## Spring Season

- Pre-season begins mid-March
- League games played late March through mid May
- Tournament - Stenger Tournament Memorial Day weekend

Uniform – EDGE Recreational Uniform (Red and White)

How to register – Through your Real Colorado EDGE Member Account





# Competitive Soccer

Team Formation – In Season Evaluation and Competitive Tryouts

Commitment level – Team by team basis

Coaches – Paid Coaches with Licenses or working towards license

Team levels – Teams are built by placing like abilities together

- Competitive = Select, United, Legends, Eagles
- Intermediate = Mustangs, Wildcats, Panthers

# teams per age group – Generally 4-6 competitive teams created (9v9 – max 14 player rosters)

Practices – 2-3 nights per week depending on level of team

Staff and Staff Training –

- Competitive teams will have staff training
- Intermediate players pay for additional in-season training 1x per week for 6 weeks

Team Plans – Each team will have a specific yearly plan that will be handed out at Tryouts

State league – 8-9 league games per season. Each team is placed in an ability level state division

Tournaments - Most teams will only play in-state tournaments. 2-3+ tournaments per year.

Travel – League play is based on team ability. Travel depends on teams we are grouped with. Mostly Denver Metro area



# Competitive Soccer

What is the season and year calendar?

## Summer Season

- Preseason camp begins July 23

## Fall Season

- Pre-season begins late July
- Usually 1-2 pre-season tournament in-state (Competitive teams)
- League games played late August through early November

## Winter

- Indoor soccer team by team basis. Nothing mandatory during the winter
- Futsal Training

## Spring Season

- Pre-season begins late January/early February
- Pre-season tournament February or March
- League games played mid-March through mid May
- Tournament Stenger Tournament or Real Colorado Cup Memorial Day weekend
- Tryouts for following year start after Memorial Day

Uniform – Competitive Uniform (Red and White) used for 2 years

Playing Time

Multi-sport athletes

Goalkeeper position



# Competitive Soccer

## Player Centered Focus

- Player's Character is extremely important and will be discussed throughout the year. Character is a big priority for us at the club!
- The players will continue to learn how to train hard - dress for success.

## Soccer Areas of Focus for 11U players

- Technical
  - 1v1 - Can players attack and defend in 1v1 situations
    - We want the players to be comfortable and creative with the ball
  - Ball Striking
  - Passing and Receiving concepts and ideas
- Tactical
  - Teach the players to understand basic concepts of team shape and formations

Terms you will hear

**Creative**

**1v1 Shredders**

**Soccer IQ**

**Be a problem solver**

**Compete**



# Competitive Soccer

Cost

Competitive	2018-2019
11U-14U	total fee
	per year
Select	\$1,450
United	\$1,375
Legends	\$1,070
Eagles	\$1,070
Mustangs Wildcats Panthers	\$830

Does not include tournaments, uniforms, indoor field space if needed, coach’s expenses for travel tournaments

Payment Plans – flexible options are available

Fundraising - Different options and programs available

- Grocery Script Program
- GL Script



# RCE Programs 11U-14U

## Real Colorado Edge 2018/2019 Programs 11U - 14U

What the Players Get	Recreational	Intermediate	Competitive
Coach	Volunteer Coach	Coach with license or will be working on Licensing	USSF F License Minimum or NSCAA Level 1 Diploma
Season Length	10 weeks per season	12-14 weeks per season	16-20 weeks per season
Weekly Training	1-2 per week	2 per week (optional 3rd for additional fee)	2-3 per week
<i>Approximate</i> Contact Days Per Season (Depending on Team Plan)	15-30 days per season	32-60 days per season	45-100 days per season
Staff Training	No	Optional - can opt into staff training for a fee	Depends on the level
Teams			
Tournaments	Max 1 per season	2-3 per year	2-6 per year
Out of State Travel	No	No	Available for Select and United teams
Playing League	In-House League or Front Range State League	Front Range State League or Centennial League	Champions League or Centennial League
11U / 12U Teams – game format	9v9	9v9	9v9





# RCE Programs 11U-14U

## Real Colorado Edge 2018/2019 Programs 11U-14U

What the Players Get	Recreational	Intermediate	Competitive
<b>Other Items</b>			
Player placement based on tryouts	No (players placed based on availability of teams and roster sizes)	Yes (current Rec.Teams contact age group Director)	Yes
Player Commitment	Season (Fall and/or Spring)	12 month (Aug-July)	12 month (Aug-July)
<b>Costs</b>			
Registration Fee <b>11U-14U</b>	\$155 per season (\$310 per year)	\$830 (per year)	\$1070-1450 (per year)
Tournaments	\$40-55 per tournament per player	\$40-55 per tournament per player	\$40-80 per tournament per player
Uniform (used for 2 years) - <i>approximate</i>	\$90	\$200	\$300



# 11U Tryouts

## Dates/Times

- Tuesday May 29 and Wednesday May 30 @ Stenger Soccer Complex
- Girls 4:30pm / Boys 6:15pm

Pre-registration – Through your RCE Member Account

Player assessment – Done by RCE Staff throughout 10U season, kick-arounds and Recreational Coach feedback

Players from outside of EDGE – Contact appropriate Director of Coaching. Create an account to register for tryouts.

Team formation - Players are placed on teams based on their ability.

Communication protocol – Following the last night of tryouts the coaches will contact all players via phone followed by an official offer online through the Member Account.

Timeline on notification of making a team – All players will be contacted within 72 hours of the final night of tryouts.

Accepting a spot – You can accept your competitive team offer through your Member Account. Acceptance of an offer coincides with Competitive Registration.

Team meeting information will be announced closer to tryouts.

Uniforms – 2 years – Uniform fitting nights are tentatively scheduled for week of June 11<sup>th</sup> – Specific Dates & Times TBA

## What do tryouts look like?

- Player Check In at Tent
- Technical Warm Up
- Small Sided Games
- 9v9 games

## What do coaches look for in a player?

- Technical Ability
- Tactical Understanding
- Physicality/athleticism
- Mentality – tenacity, effort, drive



# 11U Coaches - Girls

## Director of Coaching - Girls

Ryan Henkel  
Jay Hamilton

[ryanh@edgesoccer.net](mailto:ryanh@edgesoccer.net)  
[jayh@realcoedge.net](mailto:jayh@realcoedge.net)

### Select

Ryan Henkel

- Girls Director of Coaching at RCE
- Premier Diploma with United Soccer Coaches

### United

Erin Crask

- USSF E License
- Has coached with RCE since 2011

### Legends

Andy Bjorlow

- USSF E License
- Has coached for 15 years with RCE

### Eagles

Ken Stelman

- USSF E License
- Has coached for 4 years

### Mustangs

TBA

### Wildcats

TBA



# 11U Coaches - Boys

## Director of Coaching - Boys

James Rooks  
Colin Mullaney

[jamesr@edgesoccer.net](mailto:jamesr@edgesoccer.net)  
[colinm@edgesoccer.net](mailto:colinm@edgesoccer.net)

### Select

Colin Mullaney

- Associate Boys Director of Coaching
- USSF A License

### United

Kyle Kleeburg

- USSF C License
- Assistant for GoalKeepers at RCE

### Legends

Chris Horning

- USSF E License
- 5+ years of coaching youth soccer

### Eagles

Scott Kozney

- USSF E License
- Coached with RCE for 7 years

### Mustangs

Adam Overstreet

- USSF E License
- Coached with RCE for 3 years

### Wildcats

TBA



# Questions?

THANK YOU FOR YOUR TIME

This presentation will be available on our website [www.edgesoccer.net](http://www.edgesoccer.net)

